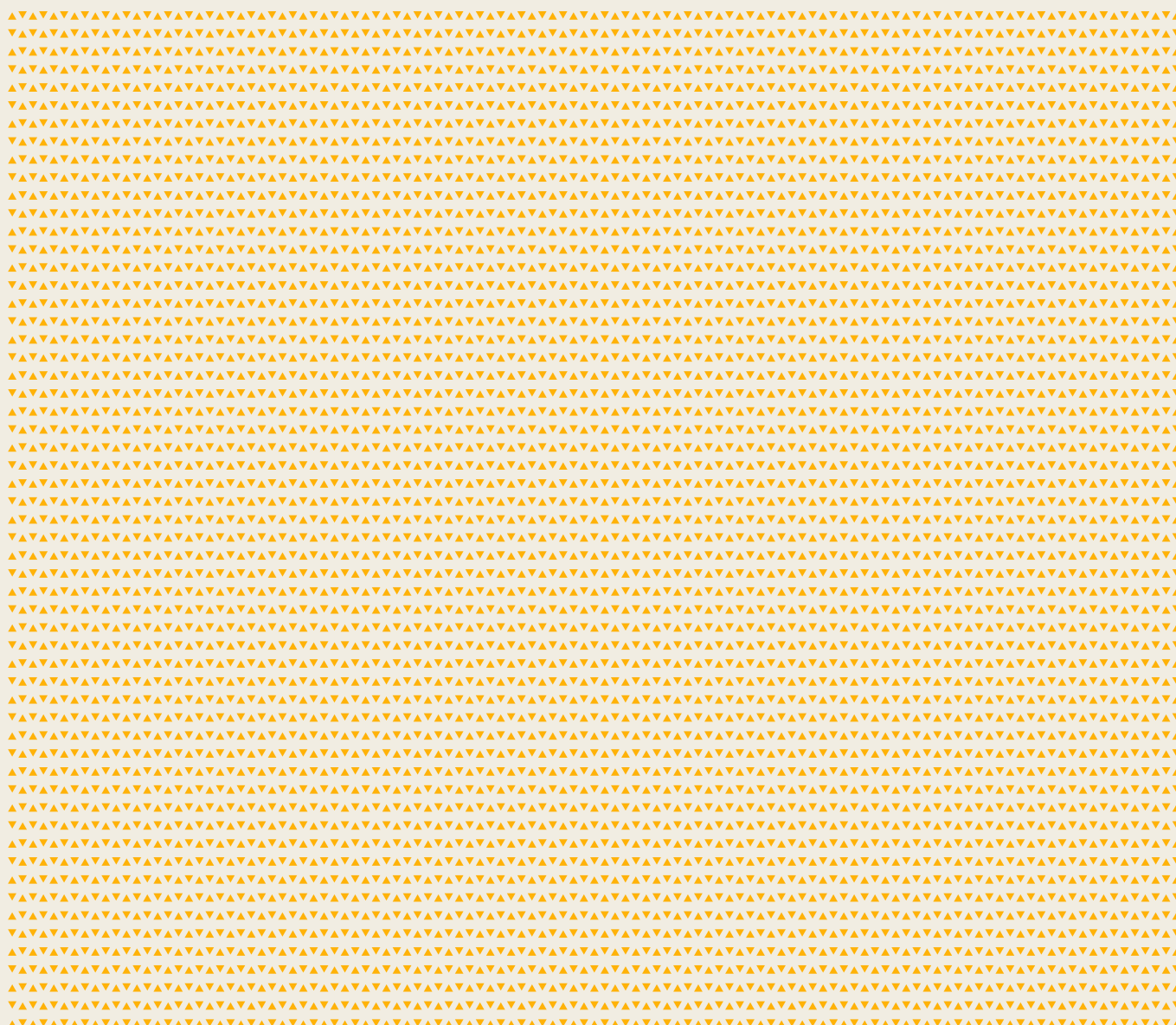




FURNACE

Camp and Furnace, 67 Greenland St,
Liverpool. L1 0BY

Venue Information, Technical Specs





THE LIBERTINES / MILES KANE / THE CORAL / THE LIGHTNING SEEDS / THE ZUTONS / THE WOMBATS / ELLA EYRE
JESS GLYNNE / BRIAN JONESTOWN MASSACRE / THE SNUTS / BLOSSOMS / YUNGBLUD / LITTLE SIMZ / BECKY HILL
BLONDES / REBECCA FEGURSON / ANNIE MAC / NINA KRAVITZ / ODYSSEY / KAE TEMPEST / BILLY OCEAN
SUPER FURY ANIMALS / SPIRITUALIZED / CRAIG CHARLES / DE LA SOUL / ROB VINCENT / SINK THE PINK
CIRCUS / CREAM / MARTHA WAINWRIGHT / DJ JAZZY JEFF / STEVE MASON / MOGWAI / BILL RIDER JONES
CARIBOU / TODD TERRY / GHOSTFACE KILLA / BBC RADIO 6 MUSIC FESTIVAL / JULIET LEWIS AND THE LICKS
YOUSEF / PIXEY / THE HORRORS / MASEO / CASINO / THE HEAVY NORTH / MICHAEL ALDAG / BEN RAU
THE SUNDOWNERS / BIG JOANIE / DHARMA COLLECTIVE / LIVIN JOY / NORMAN JAY / ANGIE BROWN
THE CHRISTIANS / LAPSLEY / CHIBUKU / MIC LOWRY / ROZELLA / ZUZU / THE STAVES / JACK SAVORETTI
SYBIL / LIVERPOOL SOUND CITY / SONIC YOOHA / ABANDON SILENCE / BRAZILLICA



VENUE CONTACTS

Live Diary Holder

Aoifé Niblock
aoife@ghostwriter.events

Production Contact:

Joe Roberts
joe@ghostwriter.events

Ticketing Contact:

Ticketing@ghostwriter.events

ADVANCES

Please send your show advances & tech specs to the following distribution list:

Joe Roberts
joe@ghostwriter.events

Aoifé Niblock
aoife@ghostwriter.events

SALEABLE CAPACITY

Furnace: 1250 including guests

Seated*: 400 including guests

Furnace (Short Hall): 600 + 30 guests

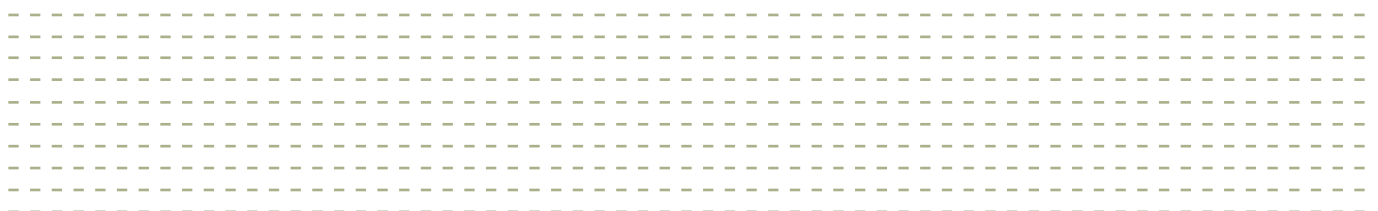
Seated*: 200 including guests

Please note that both Furnace spaces will not be in operation at the same time -
you will have exclusive use of all production and backstage facilities

*Seating is not provided in house - our recommended supplier is Childwall Chair Hire

LICENSING

The venue is licensed to open to the public from 10am and holds a 4am license for live music and club events.





DOOR TIMES & CURFEWS

Door times are per your requirements; however, please note our standard door time for concerts is 7pm with an 11pm curfew.
Early doors can be discussed to suit requirements.

For club nights, our standard door times are 11pm with a 4am curfew.

Early doors can be discussed to suit requirements but may not always be possible.

AGE RESTRICTIONS

For any events that curfew at or prior to 11pm, we are 14+, under 16s must be accompanied by an adult (18+) at all times.

All events taking place after 11pm will be limited to 18+. ID will be required for entry on these events.

TICKETING

Online: www.campandfurnace.com

Allocation: The venue requires a minimum of a 50% of the saleable capacity to be initially available via the venue See Tickets account.

Pre-sales: The venue requires a 24 hour pre sale via venue allocation.

Ticketing Stock: On allocating tickets, please check the venue ticket scanners are compatible with the agencies you are selling through. If they are not, venue stock will be provided.

Restoration Levy: There is a 75p per ticket (gross) restoration levy applicable on all Furnace events.

Close Offs: Tickets should come off sale no later than 2 hours prior to the event opening. Please send all close offs, including barcode files, to ticketing@ghostwriter.events.

ACCESSIBILITY

Customers with accessible requirements will be offered a space in our accessible viewing area, located to the front of stalls on stage right. Complimentary carer tickets are also available via the venue.



PARKING FACILITIES

Venue Address: 67 Greenland Street, Liverpool, L1 0BY

Capacity: 1 x bus outside the venue

Power: 1 x 32a 3 phase

Vans/Cars: All other vehicles must use street parking (this is chargeable mon-fri until 6pm) or there is a public car park across the street from the venue at Cains Brewery Village, Stanhope Street.





VENUE PRODUCTION FACILITIES

ROOMS AVAILABLE

1 x Production office
1 x Large dressing room/green room
1 x medium dressing room
2 x toilets/showers

WIFI

Yes – backstage only. Passwords will be supplied on show day

CATERING FACILITIES

There is no dedicated kitchen or separate space for catering, toured catering is not advisable.

LAUNDRY FACILITIES

Washer/Dryer available to use. Detergent not supplied.

TOWELS

Available upon request, these are chargeable

AFTER SHOW FACILITIES

Facilities are available. Please discuss in advance of the show day

MERCHANDISE

There is no fee for selling merch. This can be set up inside the foyer and tables can be provided on request.

FILMING & RECORDING

Please contact the venue team should you wish to film or record any part of the event at the venue, either for commercial or non-commercial gains.

Depending on filming requirements, this may affect capacities and levy a few, so please contact us in advance of the event.

CROWD MANAGEMENT

Supplied in house: Titan Risk Management

SETTLEMENTS & CASH ADVANCES

Please note that we do not have the facilities to provide cash advances or settle shows in cash.

CREW

Please request during the advancing process. We will book crew on your behalf via our preferred crewing supplier. This will be recharged on the show settlement.

RUNNER

The venue will be happy to assist in recommending local show runners. All suppliers must be a recognised and reputable company with correct insurances.

LOAD IN

Load in is generally not available before 11am, or 1pm for short hall events. Early access to showers/toilets exclusively can be arranged where required.

If you require access to load in before this, we charge an additional £100 per hour. Please contact us in advance to confirm if this is possible and to arrange.



LOAD IN DETAILS

Vans or Small Trucks: Can drive directly into the venue via a shuttered entrance on Parliament Street

Buses with Trailers: Trailer can be unloaded in the bus parking position and equipment wheeled / carried to load in door on Parliament Street. For smaller cases, there is level access via Greenland Street where the doorway measures;

Height - 2.25m

Width - 1.3m

STAGE SIZING & RISERS AVAILABLE

Stage construction: 8' x 4' steel deck sections

Stage Width: 10m

Stage Depth: 7m

Stage Height: 1m

Risers: 2 x 8' x 4' risers available

FOH BARRIER

Supplied in house - Mojo style barrier

RIGGING & MAX FLYING WEIGHTS

N/A - House Trusses are fixed. Any touring equipment must be on the floor.

STAGE POWER

1 x 63a 3 Phase - Used for House PA

1 x 63a 3 Phase - Used for House Lighting rig

1 x 63a 3 Phase - Available for use.

SPECIAL EFFECTS

Smoke & haze may be used freely. Pyrotechnics & lasers may only be used by prior arrangement. We will require method statements, risk assessments and insurance for our records and all operators must be deemed competent and qualified. A minimum of 14 days notice is required for this.

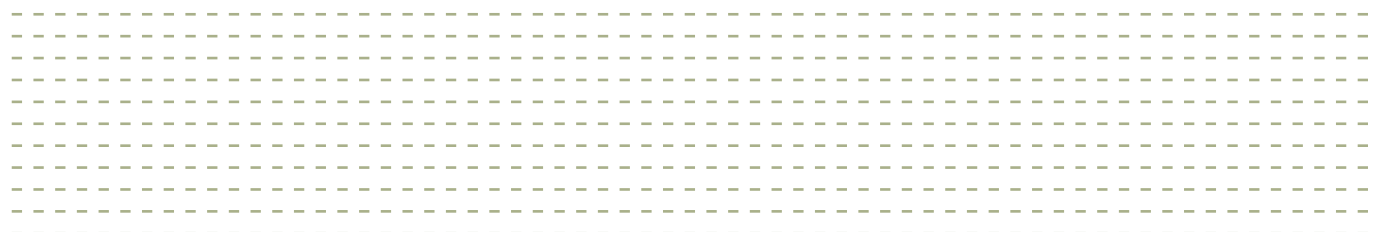
FOH POSITION

Location: Centre of venue at ground level

FOH to Stage: 13.5m from front of stage, Centre of room.

BACKDROPS

There is a backdrop bar installed behind the rear truss. If you wish to use this, please ensure that an up to date fire safety certificate is provided in advance.





AUDIO SYSTEM

FOH PA:

- 16 Coda ViRAY – 8 per side
- 4 Coda HOPS8T

Subs:

- 8 Coda SCP-F Sensor controlled high output subwoofer – 4 per side.

Audio Control:

FOH System

- Soundcraft Vi3000 FOH Console

Monitor system

- Soundcraft Vi1 Monitor Console

Wedges

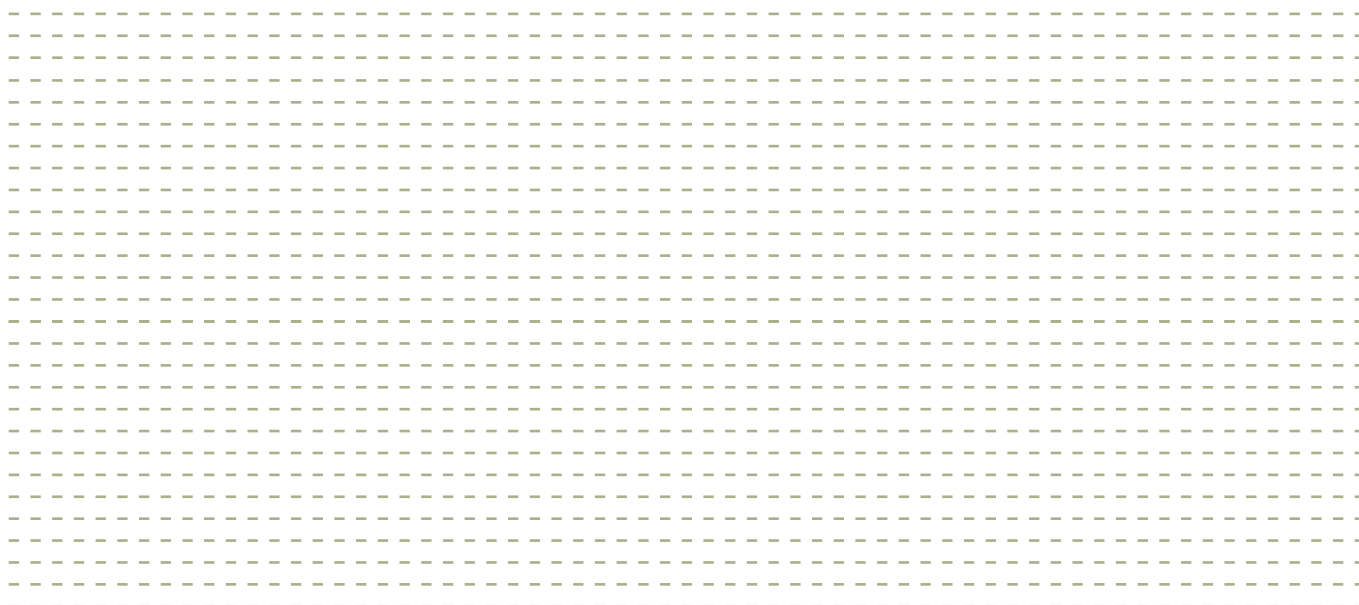
- 10 x Adlib 12" & 2" MP2 Passive Wedge
- 2 x Adlib 15" & 2" MP5 Bi Amp Wedge

Microphones & Stands

- We have a variety of microphones and stands available. Please contact Joe Roberts if you require a full list.

With prior notice, we can also supply the following side fills

- 2 x AA215 Subs
- 2 x AA FD3 Full Range Cabinets





LIGHTING SYSTEM

Control:

- Avolites Tiger Touch II

Rear Truss:

- 6 x Rogue R3 Spots
- 6 x Rogue R2 Washes
- 4 x Cuepix WW2
- 2 x Proton 3k Strobes

Mid Truss:

- 6 x Rogue R3 Spots
- 6 x Rogue R2 Washes
- 2 x Cuepix WW2

Front Truss:

- 6 x Source 4 Jr's
- 5 Pixyline 150

Floor:

- 4 x Colourdash Par-hex 12

FOH position

13.5m from front of stage, Centre of room.

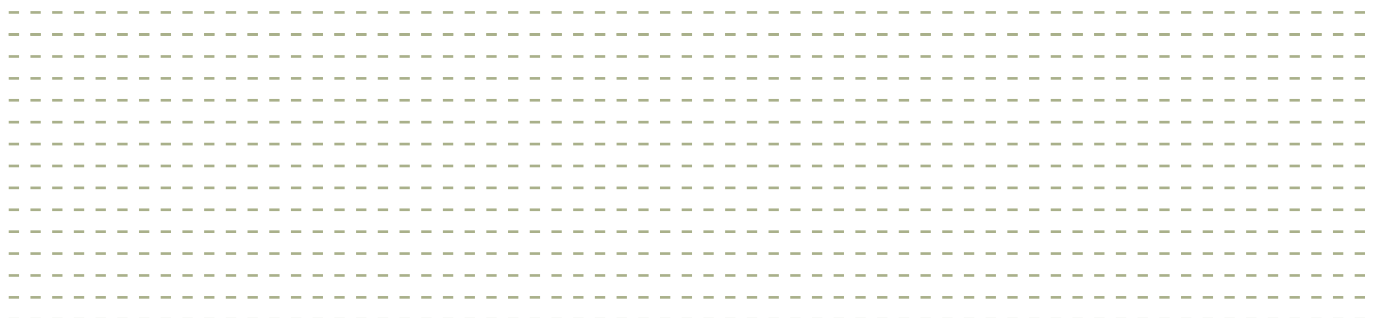
Full lighting plot available on request.

STAGE PROJECTION

We have a projector and screen in house. The screen is situated at the rear of the stage. The projector is in front of the front truss. Any images will project through the artist on stage.

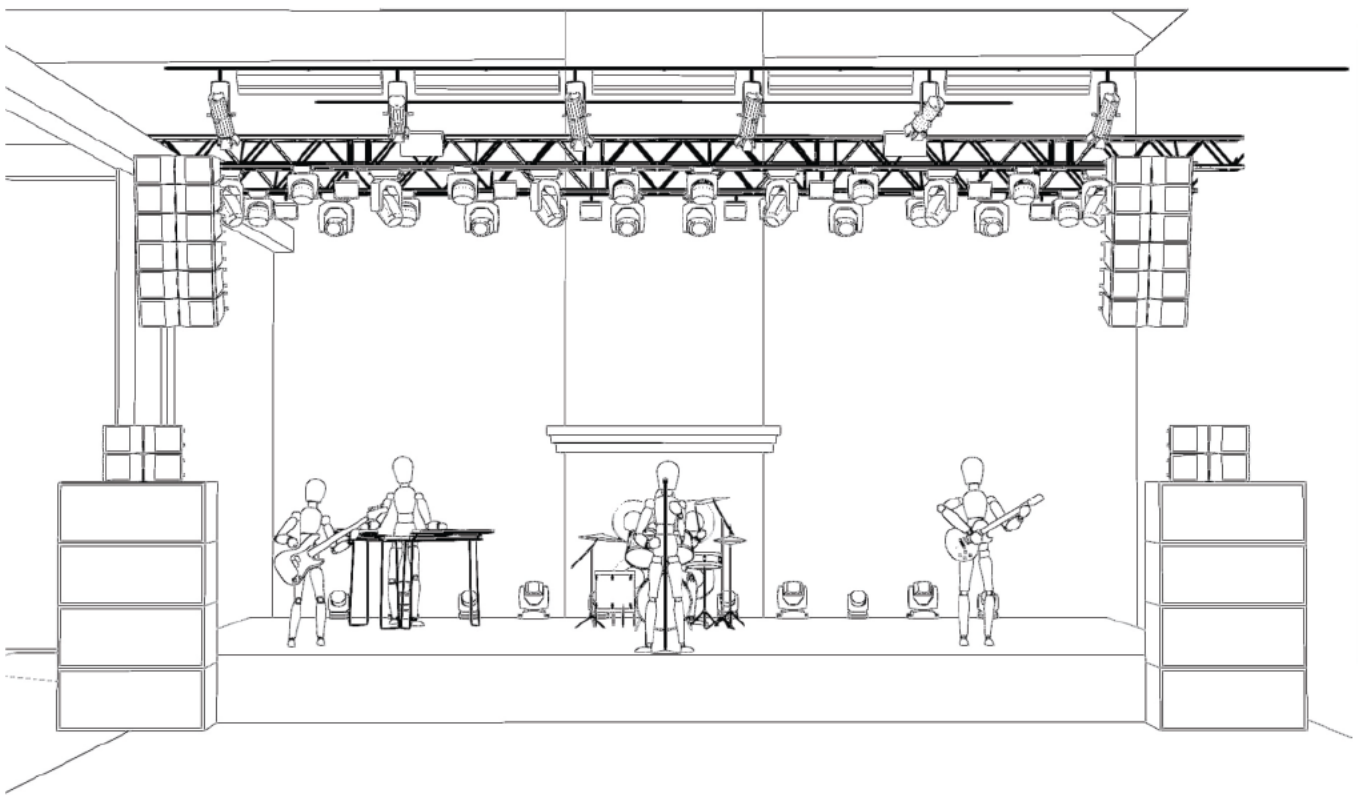
Screen - 6.11m wide x 3.64m high (image size)

Projector - Panasonic 12K Lumens (specific details available upon request)

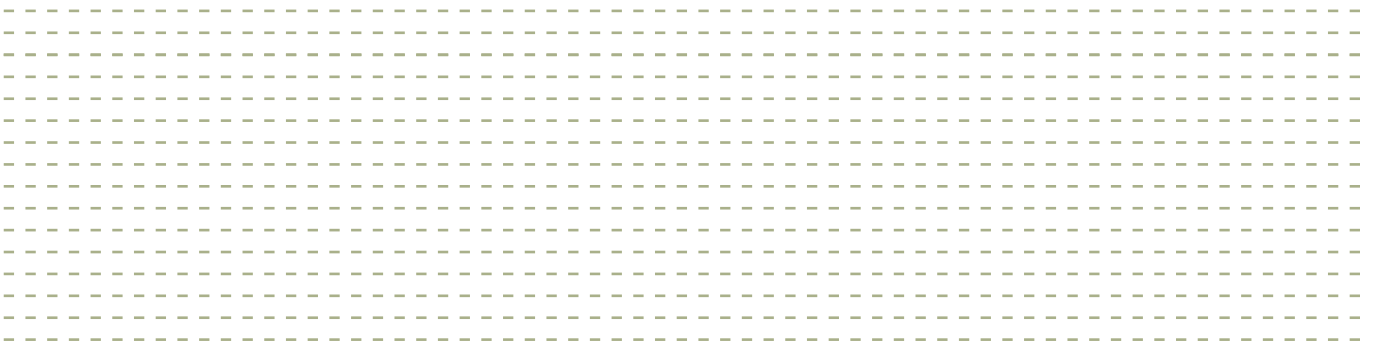




LIGHTING SYSTEM



COPYRIGHT ADLIB





REMEMBER THE GREAT INDOORS!

Right at the heart of the Baltic Triangle, Camp and Furnace encompasses a range of versatile warehouse and studio spaces. Our eclectic mix of industrial and rustic personalities, create a memorable customer experience, no matter the event. From club nights, food festivals and live music events, to exhibitions, installations and corporate functions, Camp and Furnace has a completely unique atmosphere and energy, making it the ideal venue for those looking for somewhere far from ordinary. Our studio spaces are the perfect blank canvas for galleries, rehearsals, presentations, exhibitions, photo and video shoots.



Camp and Furnace
67 Greenland St, Liverpool L1 0BY
Venue Information and Technical Specs
Information correct as of April 2023

